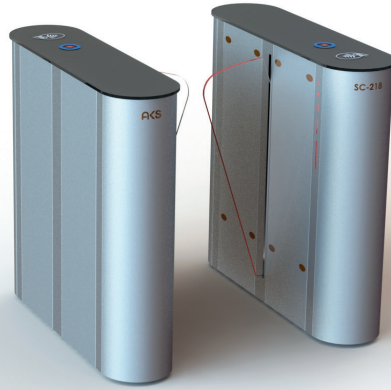




SPEED GATE TURNSTILES SC-218



| | |
|-------------------------|---|
| Body | : 304 quality stainless steel, Top plate Tempered glass, indoor use. |
| Mechanism | : CNC machined, torque controlled mechanism. |
| Wings | : Angular motion tempered glass. (Optional Polycarbonate or plexiglass) |
| Dimensions | : 270x1020x1000 mm, Wingspan: 250 mm, Passage range 540 mm, Single ~75kg, Double ~90kg |
| Indicators | : Standard dual color LED light on both feet at the front and rear, LED light on the wing. |
| Energy and Power | : 176-264 V AC 50-60 Hz / 24V DC Max: 50W |
| Temperature | : 0 / +60 °C |
| Working Mode | : Two-way locked, one-way locked, one-way free, both directions free, security and comfort mode. |
| Features | : Memory mode, service port, internal operation and transition counters.Dry contact pass information |
| Outputs | : separately for both directions, PC control port. |
| Emergency | : Free mode with emergency input. Free mode when no energy with optional battery addition.With the safety |
| Safety Status | : status input, the turnstile goes into locked mode and never opens. |
| Capacity | : 45 people per minute (with memory mode) |
| Usage Area | : Plazas, business centers, luxury office entrances, municipalities. It provides comfortable passage compared to other turnstile types. |
| Option | : Wing logo, RF control card, counter, button, leak alarm siren, black stainless. |

